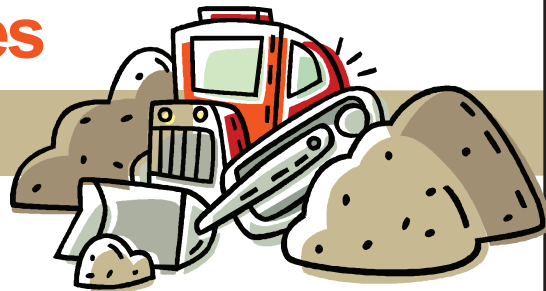


New Storm Water Regulations for Construction Sites

What you should know...

The new National Pollution Discharge Elimination System Phase II requirements took effect in 2008. These requirements apply to all construction sites in Minnesota which disturb one acre or more of soil.

Minnesota uses a general NPDES permit for construction sites. Each construction site authorized under this general permit requires a storm water pollution prevention plan (SWPPP) prior to applying for the permit.



The SWPPP must address the manner in which erosion and sediment at the site will be controlled and contained. This includes the type and placement of on-site Best Management Practices (BMPs) to control erosion and sediment.

For more information on obtaining a storm water permit, please visit www.pca.state.mn.us/stormwater.