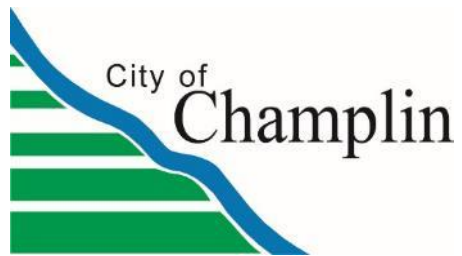


# Mississippi Drive Area Street & Utility Project

CITY PROJECT 22402

MARCH 27, 2024





## Project Location

- Mississippi Dr N
- Idaho Ave N
- Hampshire Ave N
- Hampshire Cir N
- Florida Ave N
- Edgewood Ct N
- Douglas Dr N
- Porter Dr
- Porter Cir N
- Colorado Ave N
- Adair Ave N
- Shepard Ln N
- Shepard Cir N
- Riverview Ln N
- Riverview Entry N
- Riverview Cir N
- Welcome Ln N
- Welcome Cir N
- Welcome Ave N
- Vera Cruz Ave N

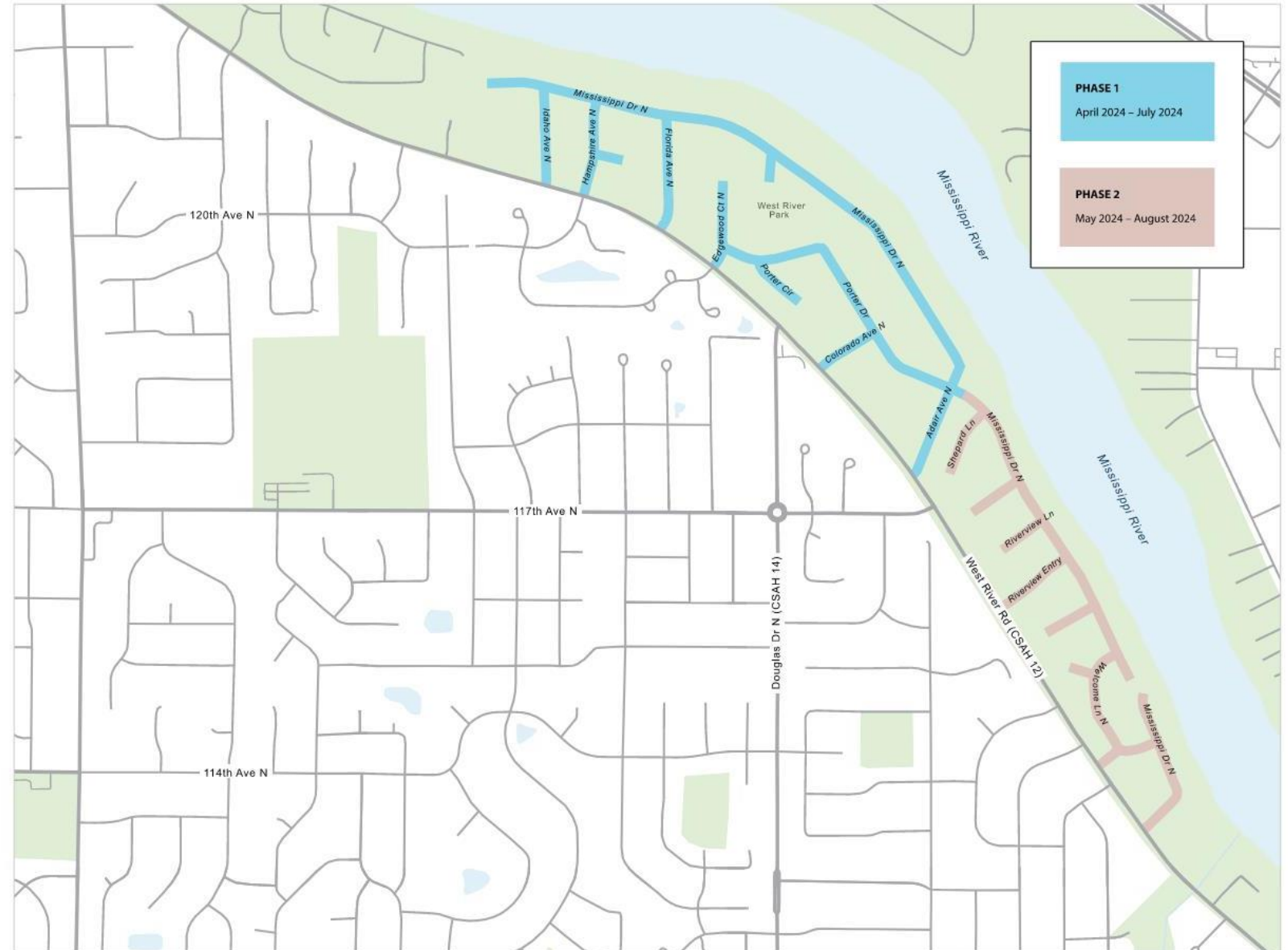
3.6 miles of roadway  
Original construction 1973-1987  
331 impacted properties





Project Phasing Plan:  
Phase 1: ~April – July  
Phase 2: ~May - August

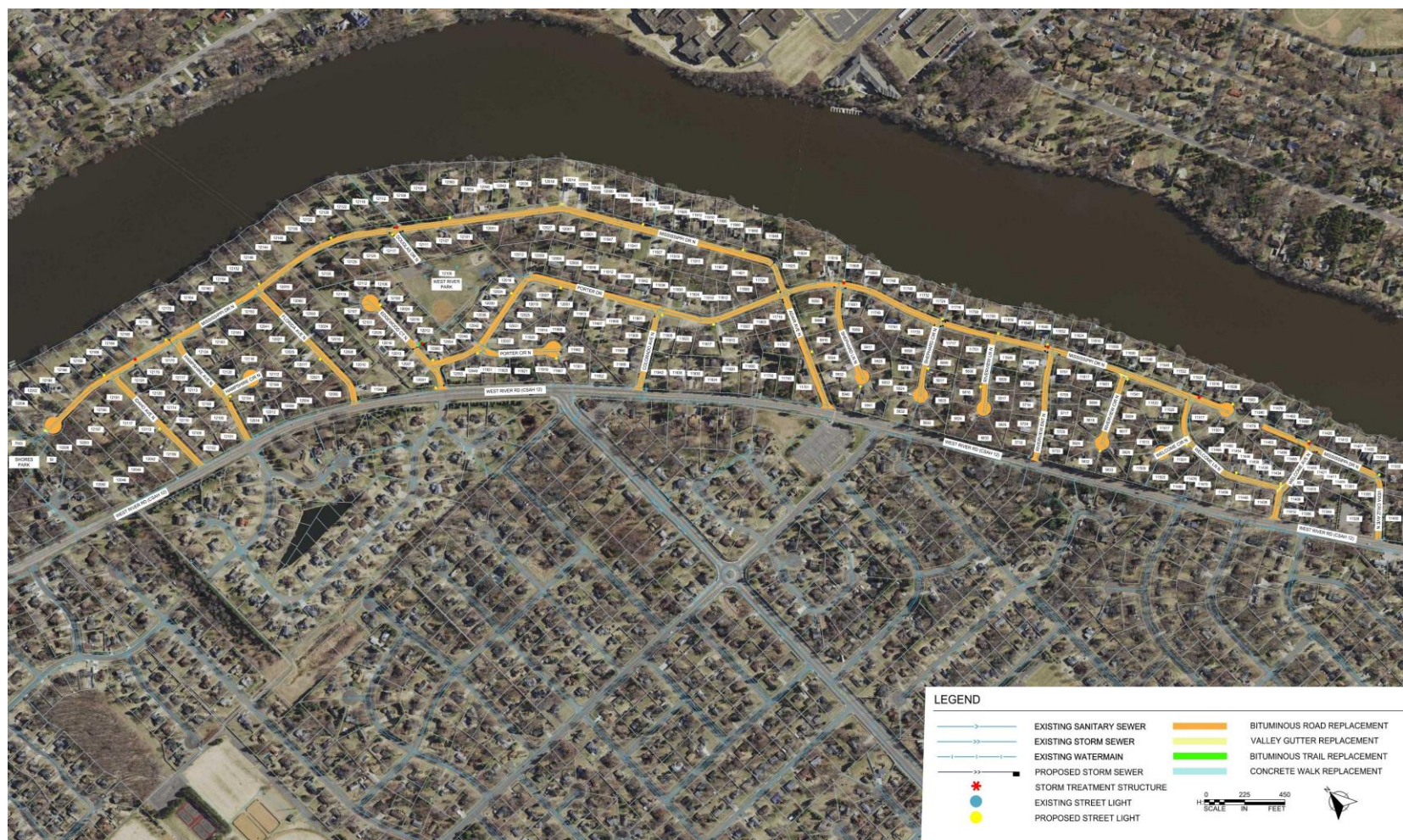
Not included in phasing:  
Final lift of pavement





# Proposed Improvements

- Street reconstruction
- Spot curb replacement
- Realignment of Adair Ave N at West River Rd
- ADA improvements to trail entrances
- Storm sewer improvements
- Watermain improvements
- Reset Sanitary Manhole Castings & Rings
- Street light improvements
- Site restoration







## Street Improvements

- Reclaim/Remove existing pavement
- Subgrade removal for new base section
- Bituminous paving – 2 lifts
- Curb will be spot removed, and replaced in-kind



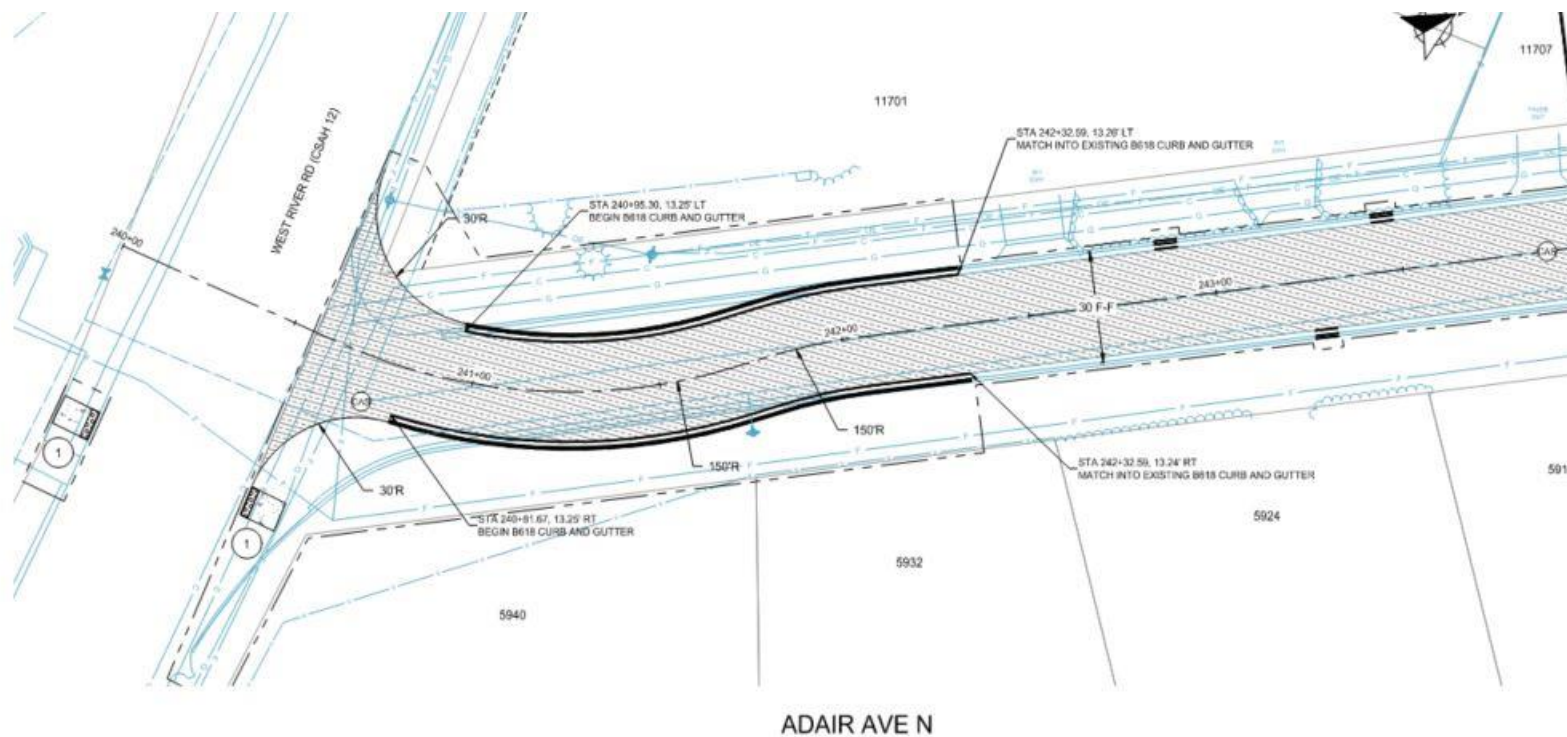
Spot Curb Repair



Pavement Removal and Grading

# Adair Ave N & West River Rd. Realignment

- Improve line of sight at the intersection.





- 
- PROTECT EXISTING FENCE (INCIDENTAL)  
12018
- 12024
- 4" PVC PIPE DRAIN CLEANOUT
- INSTALL MAIL BOX SUPPORT
- STA 192+07.27, 9.34' LT  
CONNECT TO EXISTING  
SANITARY SEWER
- 192+00
- 192+30
- 6" PVC
- 6" DIP
- 10' MIN.
- STA 192+76.39, 7.13' LT  
CONNECT TO EXISTING  
SANITARY SEWER
- 12008
- WATER SERV
- PVC
- 191+00
- 192+00
- 192+30
- 192+76.39
- 193+00
- 193+30
- 193+60
- 193+90
- 194+00
- 194+30
- 194+60
- 194+90
- 195+00
- 195+30
- 195+60
- 195+90
- 196+00
- 196+30
- 196+60
- 196+90
- 197+00
- 197+30
- 197+60
- 197+90
- 198+00
- 198+30
- 198+60
- 198+90
- 199+00
- 199+30
- 199+60
- 199+90
- 200+00
- 200+30
- 200+60
- 200+90
- 201+00
- 201+30
- 201+60
- 201+90
- 202+00
- 202+30
- 202+60
- 202+90
- 203+00
- 203+30
- 203+60
- 203+90
- 204+00
- 204+30
- 204+60
- 204+90
- 205+00
- 205+30
- 205+60
- 205+90
- 206+00
- 206+30
- 206+60
- 206+90
- 207+00
- 207+30
- 207+60
- 207+90
- 208+00
- 208+30
- 208+60
- 208+90
- 209+00
- 209+30
- 209+60
- 209+90
- 210+00
- 210+30
- 210+60
- 210+90
- 211+00
- 211+30
- 211+60
- 211+90
- 212+00
- 212+30
- 212+60
- 212+90
- 213+00
- 213+30
- 213+60
- 213+90
- 214+00
- 214+30
- 214+60
- 214+90
- 215+00
- 215+30
- 215+60
- 215+90
- 216+00
- 216+30
- 216+60
- 216+90
- 217+00
- 217+30
- 217+60
- 217+90
- 218+00
- 218+30
- 218+60
- 218+90
- 219+00
- 219+30
- 219+60
- 219+90
- 220+00
- 220+30
- 220+60
- 220+90
- 221+00
- 221+30
- 221+60
- 221+90
- 222+00
- 222+30
- 222+60
- 222+90
- 223+00
- 223+30
- 223+60
- 223+90
- 224+00
- 224+30
- 224+60
- 224+90
- 225+00
- 225+30
- 225+60
- 225+90
- 226+00
- 226+30
- 226+60
- 226+90
- 227+00
- 227+30
- 227+60
- 227+90
- 228+00
- 228+30
- 228+60
- 228+90
- 229+00
- 229+30
- 229+60
- 229+90
- 230+00
- 230+30
- 230+60
- 230+90
- 231+00
- 231+30
- 231+60
- 231+90
- 232+00
- 232+30
- 232+60
- 232+90
- 233+00
- 233+30
- 233+60
- 233+90
- 234+00
- 234+30
- 234+60
- 234+90
- 235+00
- 235+30
- 235+60
- 235+90
- 236+00
- 236+30
- 236+60
- 236+90
- 237+00
- 237+30
- 237+60
- 237+90
- 238+00
- 238+30
- 238+60
- 238+90
- 239+00
- 239+30
- 239+60
- 239+90
- 240+00
- 240+30
- 240+60
- 240+90
- 241+00
- 241+30
- 241+60
- 241+90
- 242+00
- 242+30
- 242+60
- 242+90
- 243+00
- 243+30
- 243+60
- 243+90
- 244+00
- 244+30
- 244+60
- 244+90
- 245+00
- 245+30
- 245+60
- 245+90
- 246+00
- 246+30
- 246+60
- 246+90
- 247+00
- 247+30
- 247+60
- 247+90
- 248+00
- 248+30
- 248+60
- 248+90
- 249+00
- 249+30
- 249+60
- 249+90
- 250+00
- 250+30
- 250+60
- 250+90
- 251+00
- 251+30
- 251+60
- 251+90
- 252+00
- 252+30
- 252+60
- 252+90
- 253+00
- 253+30
- 253+60
- 253+90
- 254+00
- 254+30
- 254+60
- 254+90
- 255+00
- 255+30
- 255+60
- 255+90
- 256+00
- 256+30
- 256+60
- 256+90
- 257+00
- 257+30
- 257+60
- 257+90
- 258+00
- 258+30
- 258+60
- 258+90
- 259+00
- 259+30
- 259+60
- 259+90
- 260+00
- 260+30
- 260+60
- 260+90
- 261+00
- 261+30
- 261+60
- 261+90
- 262+00
- 262+30
- 262+60
- 262+90
- 263+00
- 263+30
- 263+60
- 263+90
- 264+00
- 264+30
- 264+60
- 264+90
- 265+00
- 265+30
- 265+60
- 265+90
- 266+00
- 266+30
- 266+60
- 266+90
- 267+00
- 267+30
- 267+60
- 267+90
- 268+00
- 268+30
- 268+60
- 268+90
- 269+00
- 269+30
- 269+60
- 269+90
- 270+00
- 270+30
- 270+60
- 270+90
- 271+00
- 271+30
- 271+60
- 271+90
- 272



# Pedestrian Ramp Improvements

- Improve ADA with addition of ped ramps
  - Edgewood Ct N
  - Mississippi Dr N (North Section)
  - Adair Ave N



Sidewalk Pedestrian Ramp





# Storm Sewer Improvements

## Storm Sewer

- Install additional catch basins
- Improve storm water collection and conveyance
- Underground water quality treatment structure installation





# Sanitary Sewer Improvements

## Sanitary Sewer

- Replace Manhole Castings
- Install Chimney Seals
- Manhole repairs as needed







# Water System Improvements

## Water Service Curb Stop Replacement

- City reviews:
  - Valve box operation and function
  - Valve box condition
- Curb stops or cover lids are replaced if non-functioning
  - Property owners have been notified
  - If the curb stop is located in the driveway, driveway pavement will be removed and replaced in kind

## Watermain gate valve bolt replacement in the street



# Street Lighting

## Street Lighting

- New LED street lighting per City Standard
- 250-350 ft Spacing
- Underground conduit installation behind the curb
- Electrical service box installation



Residential Street Light



Collector Rd Intersection Light

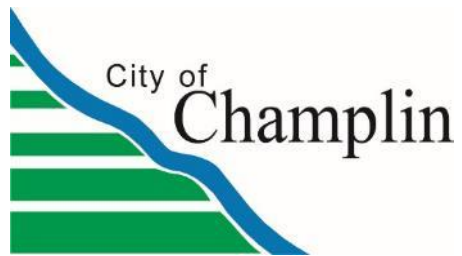




## Sign Improvements

- Street name sign will be placed on same post as stop signs where applicable.
- All other signs remain in place.





# Street Improvements

## Restoration

- Yard areas behind curb repairs will be seeded (Typically limited to 2 feet or less behind curb)
- Contractor maintains seed and hydro-mulch for 30 days

## Driveways

- Impacts due to curb replacement or utility improvements
- Notifications have been sent to property owners that will have impacted driveways due to curb stop repairs
- All driveways will be replaced in-kind



Spot Curb Replacement and Curb-Stop Repair Areas





## Construction Impacts

- Working Hours
- Access and Egress
- Mail Delivery
- School Buses
- Garbage and Recycling
- Irrigation Systems and Pet Fences
- Landscaping





## Working Hours

- Monday thru Friday
  - 7:00 am to 7:00 pm
- Saturday (as needed)
  - 8:00 am to 5:00 pm
- Sundays and Holidays
  - No work







## Access and Egress

- During Construction
  - Avoid the active construction area, if possible
  - Underground excavations will limit access to a specific direction
  - Each evening you will have access to your driveway
  - Morning notification prior to blocking the driveway
- During curb and concrete driveway construction
  - Restricted from driveway for 7 days after the latest concrete pour
  - Contractor will Coordinate street parking availability





## Mail Delivery

### During Construction

- Limited to no impact to mailboxes

Package delivery continuous during construction (UPS, Fed Ex, Amazon, etc.)

## School Buses

### During Construction

- The City will coordinate with the bus company to determine if an alternate pick-up location is required, affected residents will be notified





## Garbage and Recycling

- No change to pick up day
- Typically no issues with collection
- Notify the construction representative if you are missed
- General contractor is responsible for assuring garbage pickup



## Irrigation Systems and Pet Fences

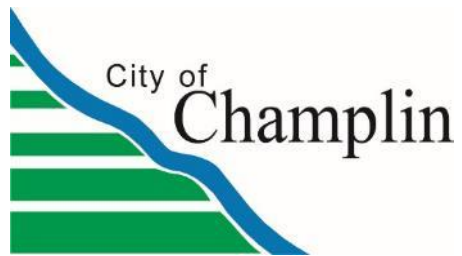
- Irrigation systems will be impacted
  - Damaged systems will be repaired during turf restoration
  - Please flag your irrigation system prior to construction. Let us know if you need flags.
- Pet fences will be impacted
  - Contractor will attempt to repair pet fences as work progresses
- Due to the nature of the project work, impacts to irrigation systems and pet fences are unavoidable. Flagging them helps us ensure that they can be repaired. Flags can be obtained at City Hall.





## Landscaping Impacts

- Hardscape materials (bricks, fencing, edging, mulch, etc.) will be salvaged and reinstalled or replaced in kind with the project
- Plantings
  - Plants near the curb may be impacted by the curb replacement or utility work.
  - Impacted plants will not be replaced by the project so we recommend that you remove any plants you want to keep.
  - If you are unsure if you need to move your plants, let us know and the inspector will meet with you at your property.



## Assessments

- Reconstruct Street with Street Lights

Reclaim and Pave Street	\$4,560.00 per unit
<u>Street Lights</u>	<u>\$1,120.00 per unit</u>
<b>TOTAL</b>	<b>\$5,680.00 per unit</b>







## Assessment Payment Methods

### Option 1:

- Pre-pay partial or full assessment amount without interest to the City starting in mid October and payments need to be in by the end of day of November 15, 2024.

### Option 2:

- Pay assessment with property taxes over a 5-year period for single family homes and 20-year period for commercial properties with interest starting in 2025
- First year's interest is from November 1, 2024 thru December 31, 2025
- Pay remaining entire balance by November 15<sup>th</sup> in any subsequent year
- No partial payments allowed

Senior Citizen and Disabled Individuals Deferred Assessment Program- Must meet income and eligibility requirements and submit application.



Questions?

## 2024 Street Improvement Projects Construction Contacts



**PROJECT HOTLINE:**  
(763) 762-2864

**FACEBOOK:**  
@cityofchamplin

**EMAIL:**  
champlinprojects@wsbeng.com

**CITY WEBSITE:**  
www.ci.champlin.mn.us (Click on "Road Projects")



**Want to receive project updates?**

Email [ChamplinProjects@wsbeng.com](mailto:ChamplinProjects@wsbeng.com) and include "2024 Street and Utility Project- your address" in the subject line to receive emails for your neighborhood.